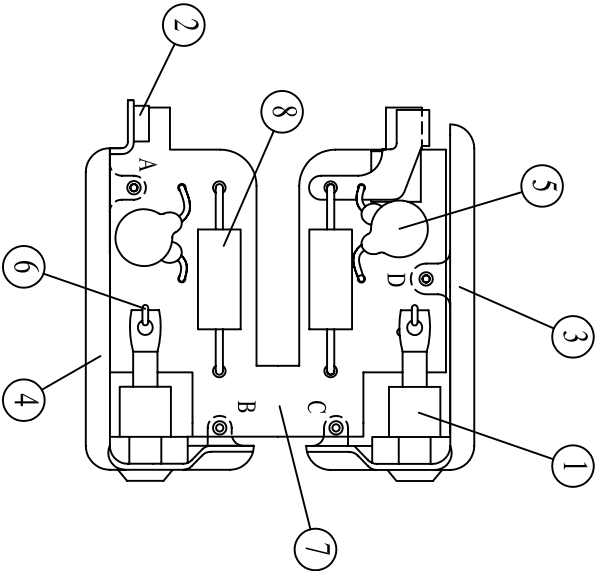


PARTS LIST		
NO.	ITEM	QTY.
1	16F120	2
2	43-2164	#2-56 SWAGE NUT
3	43-2199	SHIELD IH
4	43-2201	SHIELD IH
5	610012	CAPACITOR
6	75X6	#18 WIRE
7	XHVCOMBOBOARD	IH BOARD
8	GS-3-1MO	RESISTOR



NOTE: POINTS A, B, C AND D MUST BE PROPERLY
 ALIGNED, BOARD TO SHIELDS
 SOLDER PROPERLY FOR HIGH VOLTAGE OPERATION

MATERIAL:	
FINISH:	
REVISIONS:	1. ADDED PARTS LIST DEG 6/22/06

LUCERNEMINES, PA 15754
 (724) 479-3533

THIS DRAWING IS THE PROPERTY OF CKE AND TRANSMITTED IN CONFIDENCE. THE REPRODUCTION, USE OR DISCLOSURE, IN WHOLE OR IN PART, OF THE DESIGN OR DETAILS CONTAINED HEREIN IS PROHIBITED WITHOUT THE WRITTEN PERMISSION OF CKE.

TOLERANCE UNLESS NOTED: DECIMAL	+/-0.015
SCALE: FULL	
DRAWN: DEG DATE: 5/18/05	
APPROVED: DATE:	

TITLE:	MODULE FOR IH ASSY
DRAWING NO.	IH-MOD