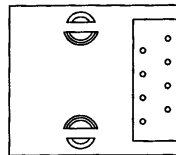


**PCB LAYOUT
(Top View)**



SPECIFICATION :

1. Electrical Char. RoHs Compliant

Insulation Resistance : 500M-Ohm Min.

Contact Resistance : 20milli-Ohm Max.

Rating Current : 1.5A Max.

Rating Voltage : 120V AC.

Dielectric Voltage : 1,000 Vrms 60 Sec. Min.

2. Physical char.

Housing : PBT Glass Filled (UL 94V-0)

Color : Black Color

Spring Wire : 0.45mm Dia. Phosphor bronze
Gold Plating Over Nickel.

Temperature Range : - 25 /+90 Deg C

Durability : 500 Mating cycles Min.

HC-032-8-F-X



HO CHIEN
www.hochien.com

TITLE

LOW PROFILE PCB MOUNT SIDE ENTRY JACK
UL & cUL FILE NO. E131820

MODULAR JACKS ASSY FOR
HC-032-8-F-X

SCALE SIZE DWG. NO. 9663 SERIES

NOT SCALED DRAWING	TOLERANCE UNLESS OTHERWISE NOTICE	INCH	MM	DR.	DATE
 THIRD ANGLE PROJECTION	LINEAR	MM INCH	00±0.01 000±0.005 0000±0.002	00±0.25 000±0.13 0000±0.05	Steven JAN-12 '05
	ANGLE ±0°30'	RADIL	+0.45 -0.15	CK'D Johnn APP'D Billv	JAN-12 '05 JAN-12 '05

DWG. NO.

AS032003