

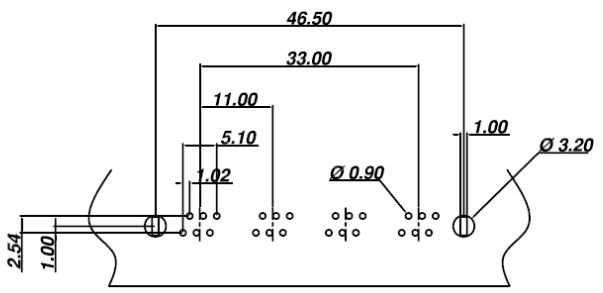
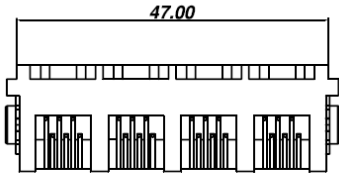
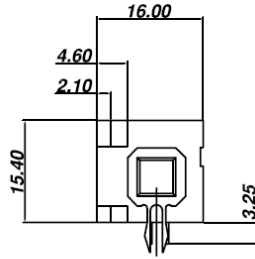
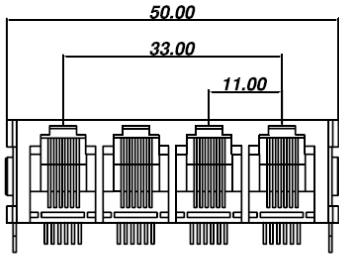
**SPECIFICATION :**

**1. Electrical Char.**

- Insulation Resistance : 500M-Ohm Min.
- Contact Resistance : 20milli-Ohm Max.
- Rating Current : 1.5A Max.
- Rating Voltage : 120V AC.
- Dielectric Voltage : 1,000 Vrms 60 Sec. Min.

**2. Physical char.**

- Housing : PBT Glass Filled (UL 94V-0)
- Color : Medium Gray Color
- Spring Wire : 0.45mm Dia. Phosphor bronze
- Gold Plating Over Nickel
- Temperature Range : - 40°C / +85°C
- Durability : 500 Mating cycles Min.



**PCB LAYOUT**  
(Top View)

**HC-020S-4-X-LX M** WITH METAL PEGS

NUMBER OF PORT	
B=6p2c, C=6p4c D=6p6c	Gold plated 1=15u, 3=50u 2=30u, 4= 6 u

<b>HO CHIEN</b> www.hochien.com	
TITLE <b>RJ11 or RJ12 SIDE ENTRY PCB GANG JACK</b> UL & cUL FILE NO. E131820	
MODULAR JACKS ASSY FOR <b>HC-020S-4-X-LX M</b>	
SCALE SIZE DWG. NO. 9640 SERIES	

DWG. NO. **AS020004-1**

NOT SCALED DRAWING	TOLERANCE UNLESS OTHERWISE NOTICE	INCH	MM	DR.	DATE
THIRD ANGLE PROJECTION	LINEAR	MM INCH	00±0.01 000±0.005 0000±0.002	Steven CK'D	MAR-01 '06
	ANGLE +0°30'	RADIL	+0.45 -0.15	John APP'D	MAR-01 '06
				Billy	MAR-01 '06