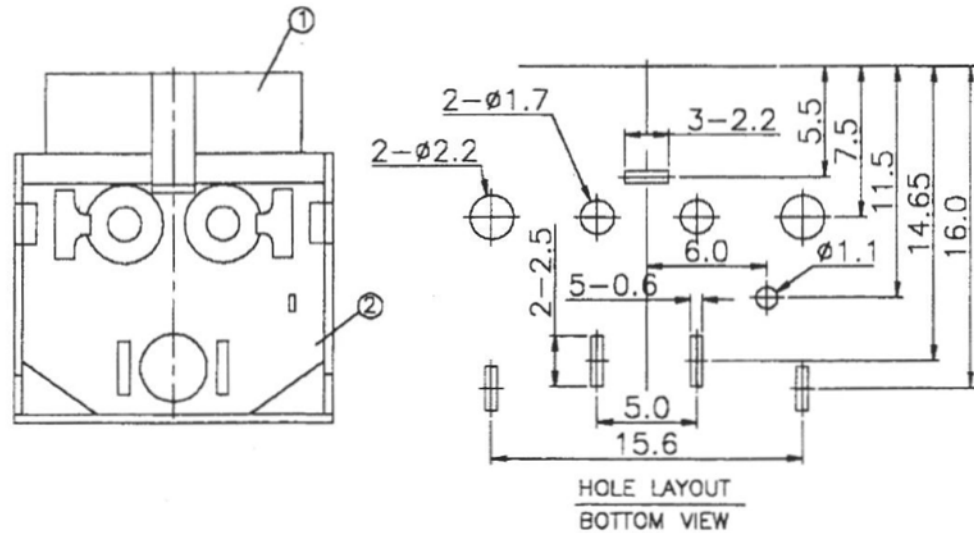


SPECIFICATIONS:

1. CURRENT CARRYING CAPACITY : PIN NO. A & B : 20 VDC 7.5A MAX .
PIN NO. C : 20 VDC 1A MAX .
2. DIELECTRIC STRENGTH : A POTENTIAL OF 250V RMS , 50/60 HZ SHALL BE APPLIED BETWEEN ANY OPEN CONTACTS , FOR 1 MINUTE , WITHOUT BREAKDOWN .
3. INSULATION RESISTANCE : BEFORE ANY ENVIRONMENTAL TEST : 50 MOHM MIN . @250 VDC
AFTER ANY ENVIRONMENTAL TEST : 5 MOHM MIN . @250 VDC
4. CONTACT RESISTANCE : BEFORE ANY TEST
PIN TO CONTACTOR NO. A,B&C : 30mOHM MAX . @20 mA ,1 KHZ
AFTER PERFORMANCE LIFE TEST
PIN TO CONTACTOR NO. A&B : 60mOHM MAX . @20 mA ,1 KHZ
PIN TO CONTACTOR NO. C : 100mOHM MAX . @20 mA ,1 KHZ
5. INSERTION FORCE AND WITHDRAWAL FORCE : INSERTION FORCE : 3.5KG MAX .
WITHDRAWAL FORCE : 0.5 - 2.5 KG
6. PERFORMANCE TEST (NO LOAD CONDITION) : SOCKETS SHALL BE SUBJECT TO 1,000 CYCLES, AT THE RATE OF 10 TO 20 CYCLES PER MINUTE .

Unless other specified,
tolerance as follows:

尺寸 Dimension	公差 Tolerance
1-4mm down	±0.10
4-16mm down	±0.20
16-63mm down	±0.30



6.	SHIELD	1	BSR-H 0.4t	Sn	
5.	C. TERMINAL	1	PBR-H 0.2t	Sn	
4.	A. B. TERMINAL	2	BSR-H 0.3t	Sn	
3.	EARTH TERMINAL	1	BSR-H 0.4t	Sn	
2.	COVER	1	P.B.T.		UL94V-0
1.	BODY	1	P.B.T.		UL94V-0
P/N	PART NAME	Q'TY	MATERIAL	PLATING	REMARKS
REVISION	APPROVAL BY	CHECKED BY	DRAWN BY	UNITS	
			Kan 00.12.12	mm	
	PROJECTION	PRODUCT	DRAWING NO.	SCALE	
		D.C. SOCKET	DC-002-S	4/1	