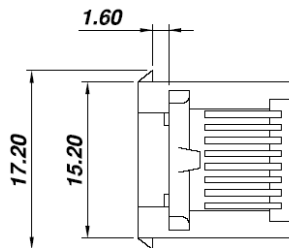


PCB LAYOUT
(Bottom View)



SPECIFICATION :

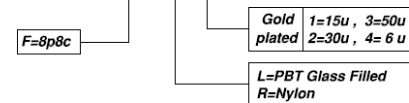
1. Electrical Char.

- Insulation Resistance : 500M-Ohm Min.
- Contact Resistance : 20milli-Ohm Max.
- Rating Current : 1.5A Max.
- Rating Voltage : 120V AC.
- Dielectric Voltage : 1,000 Vrms 60 Sec. Min.

2. Physical char.

- Housing (Option) :
 - PBT Glass Filled (UL 94V-0), Soldering Temperature:235°C
 - Nylon (UL 94V-0), Soldering Temperature:260°C
- Color : Black Color
- Spring Wire:
 - 0.45mm Dia. Phosphor bronze Gold Plating Over Nickel
- Temperature Range : - 40°C / +85°C
- Durability : 500 Mating cycles Min.

HC-003-8-F-XX



HO CHIEN
www.hochien.com

TITLE

RJ45 BOTTOM ENTRY PCB JACK
UL & cUL FILE NO. E131820

MODULAR JACKS ASSY FOR
HC-003-8-F-XX

SCALE SIZE DWG. NO.9622-8 SERIES

NOT SCALED DRAWING	TOLERANCE UNLESS OTHERWISE NOTICE	INCH	MM	DR.	DATE
<p>THIRD ANGLE PROJECTION</p>	LINEAR	MM INCH	.00±0.01 .000±0.005 .0000±0.002	.00±0.25 .000±0.13 .0000±0.05	Stevens JUL-01 '08
	ANGLE	+0°30'	RADIL	+0.45 -0.15	John JUL-01 '08
					APP'D Billy JUL-01 '08

DWG. NO.

AST003003-1