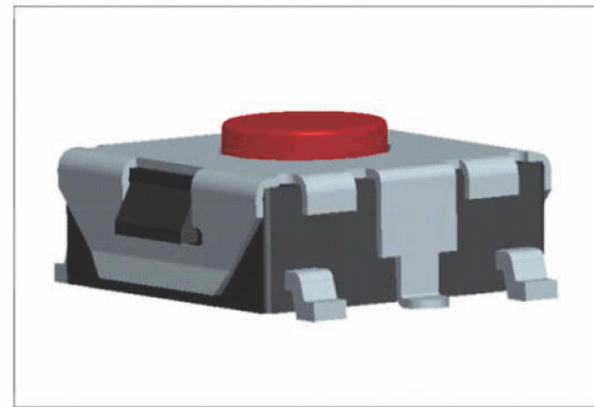


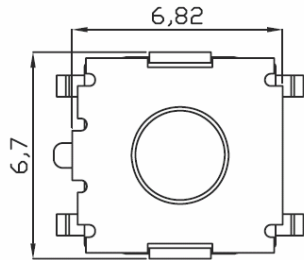
PRODUCT IMAGE



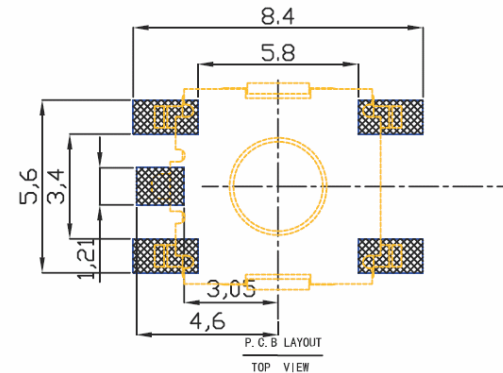
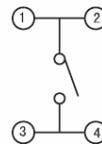
P. C. B MOUNTING PATTERN DIMENSION

the following soldering are recommended for reflow soldering

Rating: 50mA, 12Vdc  
 Contact Resistance : 100 mohms  
 Force: 160 +/- 30 gF  
 Insulation Resistance: 100M ohms  
 Dielectric Strength: 100V 60Hz 1 min.  
 Life Cycle: 100000 cycle



CIRCUIT DIAGRAM

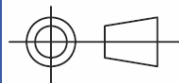


H
2.5
2.7
3.1
3.8

TITLE	TACT SWITCH	DRAWN	张 鹏	GENERAL TOLERANCE						
PART. NO.	KFC-A6.2-3.1	CHECKED	黄光雪	TOLERANCE						
DRAW. NO.		APPROVED	赵崇生	ANGLE TOL						
SCALE	5:1	UNIT	mm	DATE	23-11-2010					

HO CHIEN

WWW.HOCHIEN.COM



CHANGE TAGS	CHANGE DATE	CHANGES	REVIEW	CHECKED	COUNTERSIGN	APPROVAL
-------------	-------------	---------	--------	---------	-------------	----------