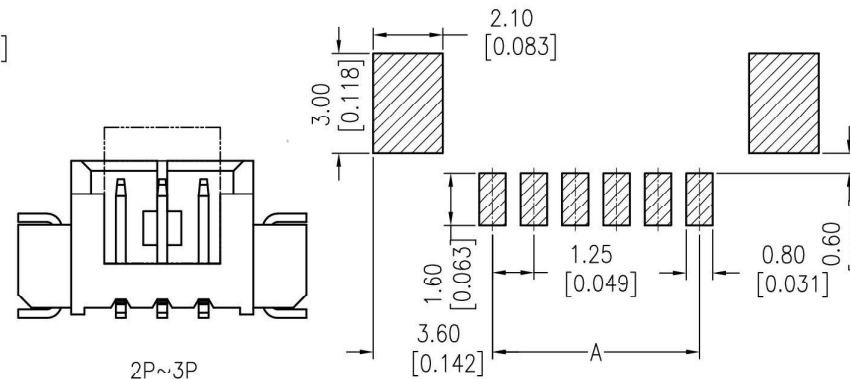
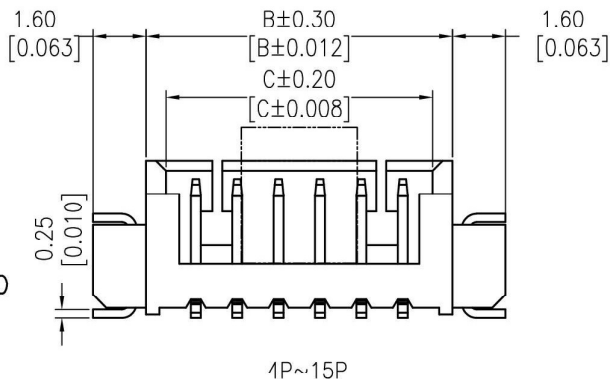


# HSF

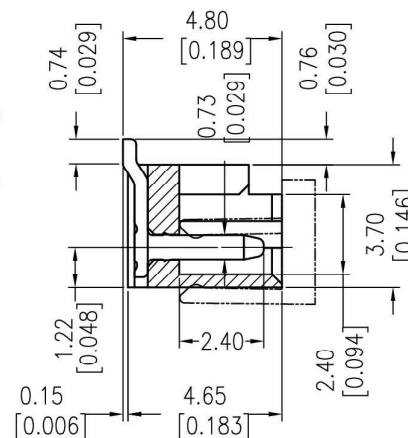
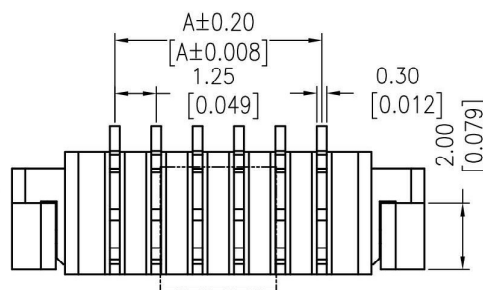
**NOTES:**

Rated Voltage:100V AC/DC  
 Rated Current:1.0AMP  
 Contact Resistance:20mΩ max  
 Withstand Voltage:500V AC/DC  
 Insulation Resistance:100MΩ min  
 Operation Temperature:-25°C to +85°C

Contact Material:Brass  
 Contact plating:Au Or Sn Over Ni  
 Insulator Material:PA6T+30%G.F UL94V-0



Recommended P.C.B Layout(Top Side)  
 (PCB BOARD TOLERANCE±0.05)



**Specification & Ordering Information:**

Circuit	Part No.	Dimension			Q'ty /Tube
		A	B	C	
02	HCA9849-02	1.25	4.25	3.05	75
03	HCA9849-03	2.50	5.50	4.30	64
04	HCA9849-04	3.75	6.75	5.55	56
05	HCA9849-05	5.00	8.00	6.80	50
06	HCA9849-06	6.25	9.25	8.05	45
07	HCA9849-07	7.50	10.50	9.30	41
08	HCA9849-08	8.75	11.75	10.55	37
09	HCA9849-09	10.00	13.00	11.80	34
10	HCA9849-10	11.25	14.25	13.05	31
11	HCA9849-11	12.50	15.50	14.30	30
12	HCA9849-12	13.75	16.75	15.55	28
13	HCA9849-13	15.00	18.00	16.80	26
14	HCA9849-14	16.25	19.25	18.05	25
15	HCA9849-15	17.50	20.50	19.30	24

				OPERATION	DRAW	DATE	SCALE	FIT	PART NO.
				X.X ±0.40			UNIT	mm	SEE TAB
				X.XX ±0.25	CHECK	DATE	SIZE	A4	TITLE:
				X.XXX ±0.15			SHEET	1/1	"M" TYPE 1.25 Wafer 180° SMT
REV	DATE	MODIFICATION DESCRIPTION	CHANGE	Angle ± 3'	APPROVE	DATE	PROJ.		Customer NO.
				DIM TOL					

**Ho Chien**  
[www.hochien.com](http://www.hochien.com)