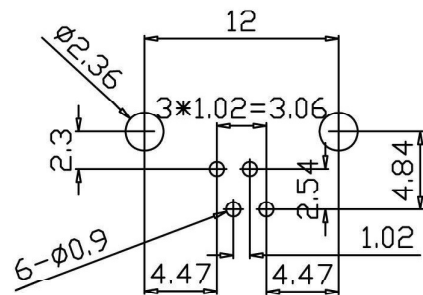
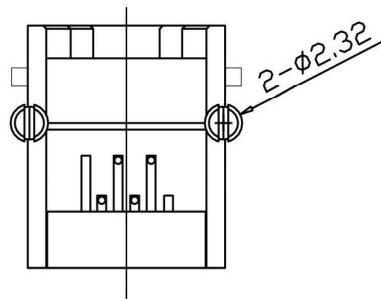
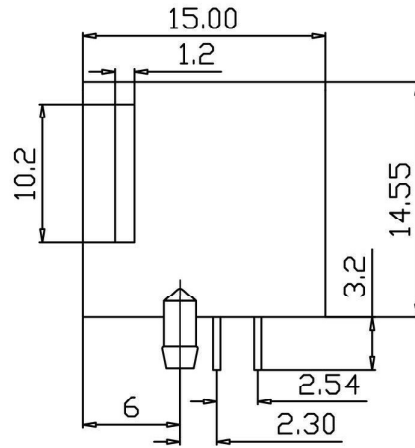
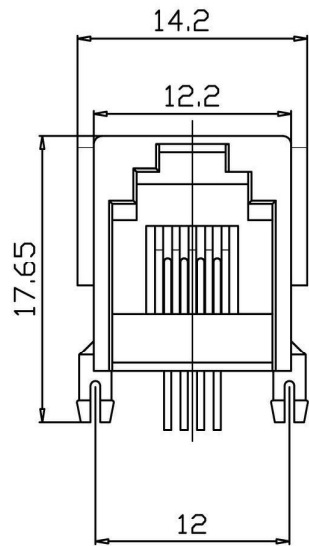


4		REV	ECN NO.	DATE



PC BOARD LAYOUT

NOTES:

MATERIAL:

- 1.HOUSING MATERIAL :GLASS FILLED POLYESTER UL94V-0.
- 2.CONTACT MATERIAL :PHOSPHOR BRONZE φ0.46mm.
- 3.PLATING :GOLD PLATING OVER NICKEL.  
FU\*,3U\*,6U\*,15U\*,30U\*,50U\*

ELECTRICAL:

- 1.VOLTAGE RATING :125 VAC RMS.
- 2.CURRENT RATING :1.5 AMP.
- 3.CONTACT RESISTANCE :30 MILLIOHMS MAX.
- 4.INSULATION RESISTANCE :500 MEGOHMS MIN @ 500V DC .
- 5.DIELECTRIC WITHSTANDING RESISTANCE :1000V AC RMS 50Hz. 1MIN.

MECHANICAL:

- 1.DURRABILITY :750 CYCLES MIN.
- 2.PCB RETENTION PRE-SOLDER :1 LB MIN.

ENVIRONMENTAL:

- 1. STORAGE : -40°C~+85°C
- 2. OPERATION : 0°C TO 70°C.

RoHS Compliant

TOLERANCES		DATE		<b>Ho Chien</b> www.hochien.com			
mm							
.0± 0.30	±	MATERIAL		FINISH		PART NO.	
.00± 0.25	±	SCALE		1:1	UNIT	mm	TM-55A6411B
.000± 0.10	±	ANGLES		± 1°		SIZE	
THIRD ANGLE PROJECTION		Designed		Checked		A4	
		06		Approved		SHEET	
						OF	